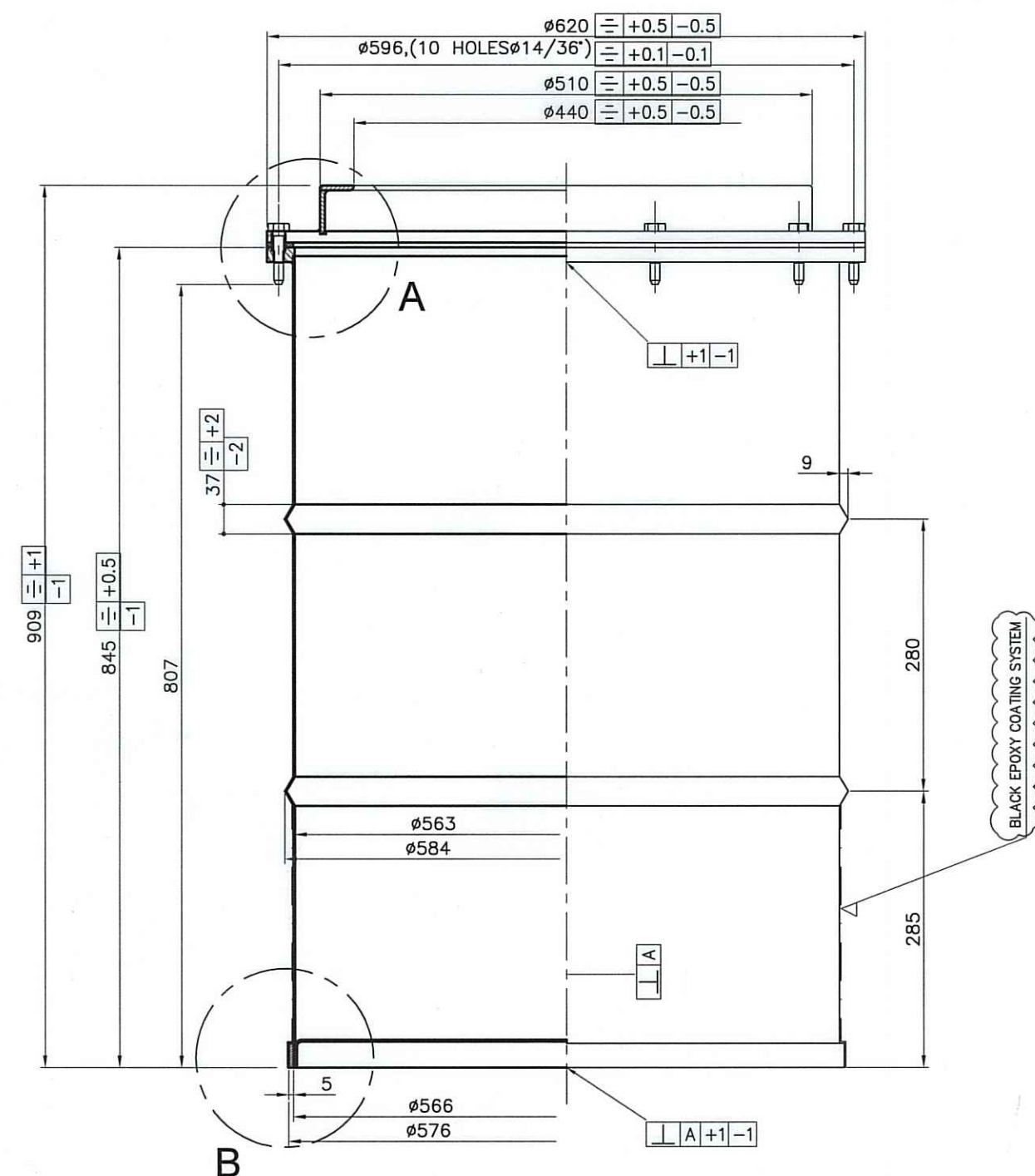
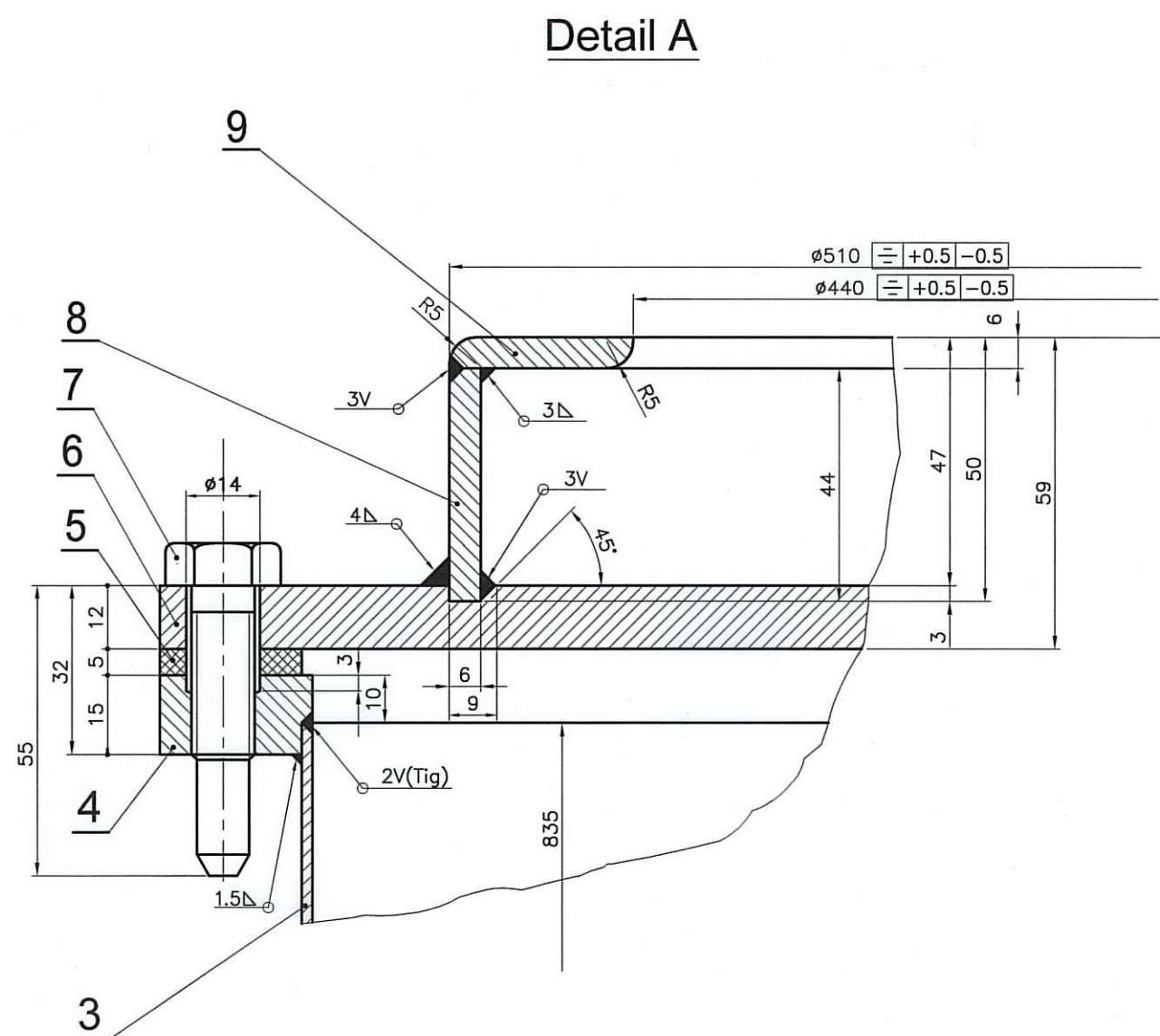
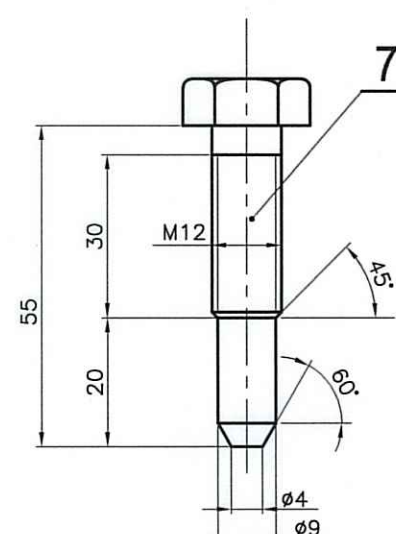


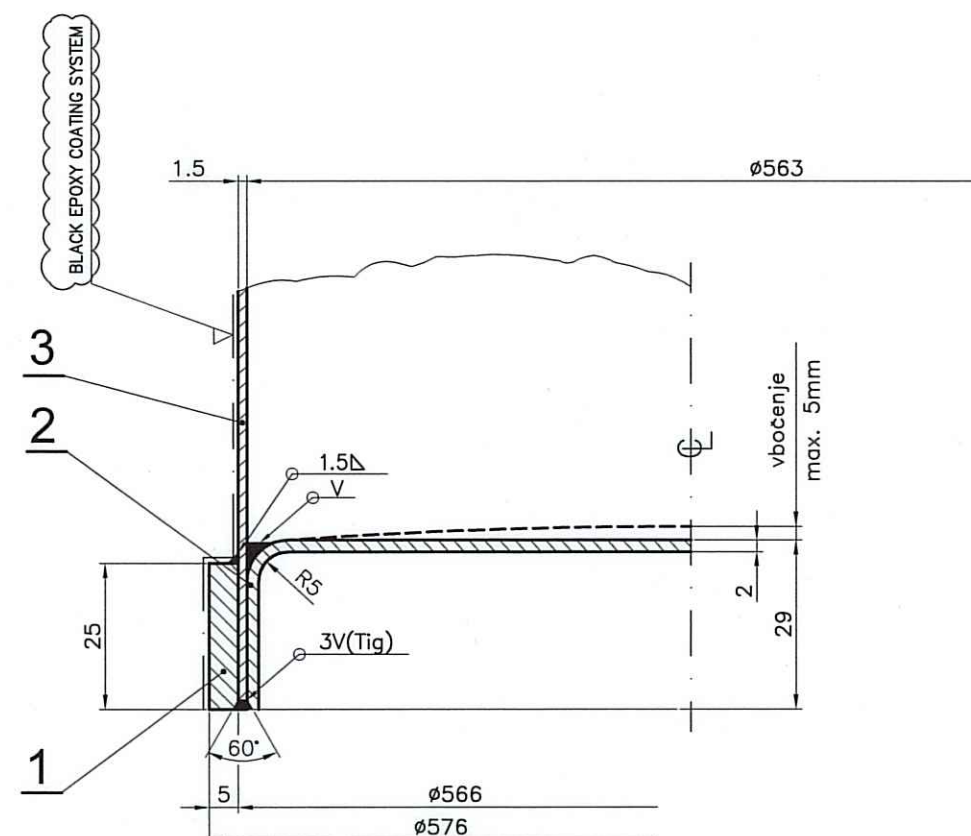
| ITEM | DESCRIPTION      | DIMENSION                             | PCS. | MATERIAL        | STANDARD<br>ASTM | REMARKS      |           |
|------|------------------|---------------------------------------|------|-----------------|------------------|--------------|-----------|
|      |                  |                                       |      |                 |                  | MAT. SUPST.  | DIN       |
| 1    | BOTTOM SIDE RING | Dv/du=ø576/ø566mm<br>S=5mm, h=25mm    | 1    | TP 316L         | ASTM A 240       | W.Nr. 1.4404 | DIN 17440 |
| 2    | BOTTOM PLATE     | Dv/du=ø563mm<br>S=2mm, h=29mm         | 1    | TP 316L         | ASTM A 240       | W.Nr. 1.4404 | DIN 17440 |
| 3    | SHELL            | Dv/du=ø566/ø563mm<br>S=1.5mm, h=835mm | 1    | TP 316L         | ASTM A 240       | W.Nr. 1.4404 | DIN 17440 |
| 4    | DRUM FLANGE      | Dv/du=ø620/ø562mm<br>S=15mm           | 1    | TP 316L         | ASTM A 240       | W.Nr. 1.4404 | DIN 17440 |
| 5    | GASKET           | Dv/du=ø620/566mm<br>S=5mm             | 1    | NATUR<br>RUBBER |                  | 45 ±5 ShA    |           |
| 6    | DRUM LID         | Dv=ø620mm<br>S=12mm                   | 1    | TP 316L         | ASTM A 240       | W.Nr. 1.4404 | DIN 17440 |
| 7    | BOLT             | M 12x55                               | 10   | TP 316          | ASTM A 193       |              | DIN 933   |
| 8    | SIDE RING        | Dv/du=ø510/ø498mm<br>S=6mm, h=44mm    | 1    | TP 316L         | ASTM A 240       | W.Nr. 1.4404 | DIN 17440 |
| 9    | UPPER RING       | Dv/du=ø510/ø440mm<br>S=6mm, h=44mm    | 1    | TP 316L         | ASTM A 240       | W.Nr. 1.4404 | DIN 17440 |



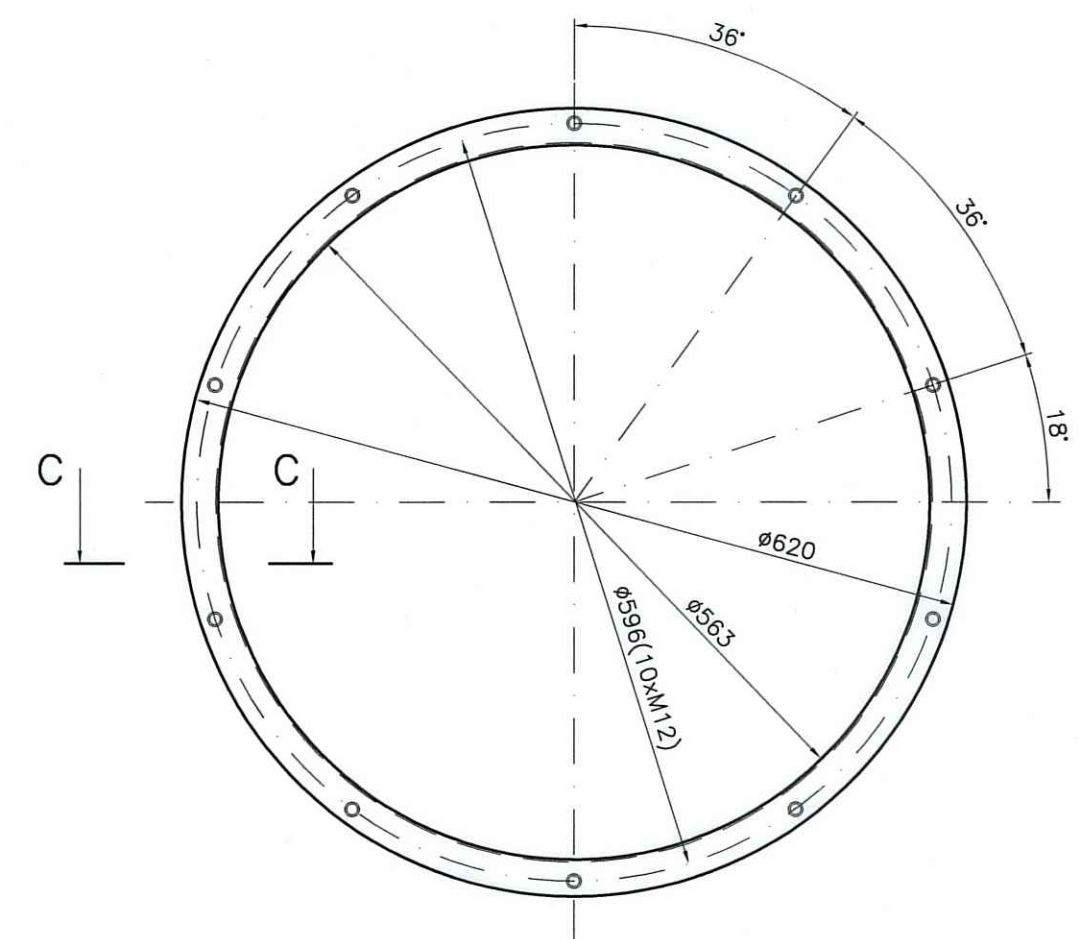
Poz.7



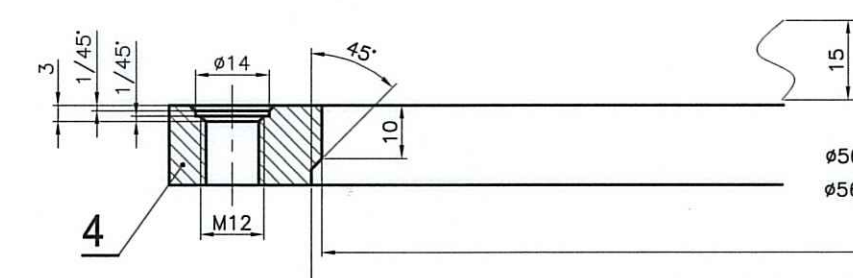
Detail B




Poz. 4



Prerez C-C



|   |            |
|---|------------|
| Nuklearna Elektrarna Krško<br>MASTER DOCUMENT |            |
| Date Received:                                | 29-01-2021 |
| Lot Number:                                   | 230649     |

|   |           |                    |           |               |
|---|-----------|--------------------|-----------|---------------|
| NUKLEARNA ELEKTRARNA KRSKO<br>NUCLEAR POWER PLANT KRSKO                               |           |                    |           |               |
| WASTE PROCESSING SYSTEM (WP)  |           |                    |           |               |
| 200L SS HEAVY DRUM FOR WASTE  |           |                    |           |               |
|   |           |                    |           |               |
|  |           | DESIGN ENGINEERING |           |               |
| NUCLEAR POWER PLANT KRSKO   |           | KRSKO, SLOVENIA    |           |               |
| MADE  |           | CHECKED            |           | LE APPROVAL   |
| 1.  | M. KODRIČ | 2.                 | M. GRICAR | 3. B. VOLARIČ |
| REFERENCE DRAWINGS:   |           |                    |           |               |
| SCALE   |           |                    |           |               |
| 238-WP-S-M01  |           |                    | WP        | 7             |
| DRAWING NUMBER  |           |                    | SYSTEM    | SH.NO.        |
|   |           |                    |           | REV           |

Original Design Firm: N/A  
Replaced Manual Drawing: N/A  
Last Revision And Date: N/A

THIS IS A CAD DRAWING AND SHOULD NOT BE REVISED OR MODIFIED MANUALLY

| NO. | DATE     | BY   | REVISION                | CKD. BY | LE APPR. |
|-----|----------|------|-------------------------|---------|----------|
| 7   | 28.01.21 | UK   | REV'D PER CAP 2021-231  | UK      | UK       |
| 6   | 29.01.18 | M.I. | REV'D PER CAP 2018-209  | Z.M.    | R.R.     |
| 5   | 01.09.14 | K.K. | REV'D PER CAP 2013-1026 | Z.M.    | R.R.     |
| 4   | 28.05.12 | F.F. | REV'D PER CAP 2011-2080 | B.V.    | V.P.     |
| 3   | 23.02.12 | F.F. | REV'D PER CAP 2011-1939 | B.V.    | V.P.     |